

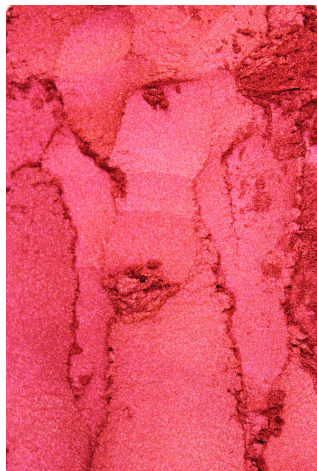
Chione™ Electric Sunset

Sunset brings new beginnings



Chione™ Electric Sunset

Sunset brings new beginnings



A new time is on the horizon with brighter, more colorful days ahead. As nights get longer, sunset marks the beginning of the night. Nights bring new beginnings filled with anticipation and energy. Shine through the darkness with bold colors and connect with rich colors of eternal sunsets and shimmering effects that move us to create bold, personal statement looks for new beginnings on the horizon.

Express your creativity with Chione™ Electric Sunset, an intense, blue-rouge metallic-like effect pigment. Based on patent pending multilayer technology, Chione™ Electric Sunset is a vegan, carmine-free, chromatic effect pigment made without any synthetic organic colorants. Create a palette of clean colors ranging from light peach, deep violet to rich burgundy with Chione™ Electric Sunset and capture all the dynamic colors of an endless sunset.

Code	Pigment	INCI	Particle Size
SK90D	Metallic-like Blue-rouge	Synthetic Fluorophlogopite (and) Titanium Dioxide (and) Iron Oxides (and) Silica	7 – 37 µm



Formulations

- Lipstick – Fiery Sparkle
[CC-US-20-35399-85](#)
- Peel Off Liner – Electric Sunset
[CC-US-20-35399-89A](#)
- Peel Off Liner – Blushing Twilight
[CC-US-20-35399-89B](#)
- Peel Off Liner – Summer Solstice
[CC-US-20-35399-89C](#)
- Nail Enamel – Galactic Sunset
[CC-US-20-35399-87](#)
- Mixing Peel Away Mask – Cosmic Evening
[CC-US-20-35399-86](#)

Fields of Application:

Eye / Lip / Nail / Face / Body

Contacts

Americas

BASF Colors & Effects USA LLC
3000 Town Center, Suite 2400
Southfield, MI 48075
USA

Asia Pacific

BASF Colors & Effects Shanghai Ltd.
No 300, Jiang Xin Sha Road
200137 Shanghai
China

Europe

BASF Colors & Effects GmbH
An der Rheinschanze 1
67059 Ludwigshafen
Germany

Discover a World of Effect Pigments

[Visit Pigment Finder](#)

Visit our website: www.colors-effects.basf.com

The data contained in this publication are based on our current knowledge and experience. In view of the many factors that may affect processing and application of our product, these data do not relieve processors from carrying out their own investigations and tests; neither do these data imply any guarantee of certain properties, nor the suitability of the product for a specific purpose. Any descriptions, drawings, photographs, data, proportions, weights, etc. given herein may change without prior information and do not constitute the agreed contractual quality of the product. The agreed contractual quality of the product results exclusively from the statements made in the product specification. It is the responsibility of the recipient of our products to ensure that any proprietary rights and existing laws and legislation are observed. When handling these products, advice and information given in the safety data sheet must be complied with. Further, protective and workplace hygiene measures adequate for handling chemicals must be observed.

© = Registered trademark of the BASF Group